



# **PRODUCT GUIDE**

2017

**PAUL MITCHELL**



# PAUL MITCHELL® NEON™

## STYLE THAT STANDS OUT

NEON™ LETS YOU DO WHATEVER YOU WANT WITH YOUR HAIR. INFUSED WITH NATURAL SUGAR, NEON™ IS A LITTLE SASSY AND A LITTLE SWEET, SETTING THE STANDARD FOR THE NEWEST TRENDS. MADE PRIMARILY FOR TEENS, NEON™ FOCUSES ON INCLUSIVENESS, INDIVIDUALITY AND BUILDING SELF-ESTEEM. WHY LOOK LIKE EVERYBODY ELSE? STAND OUT. BE YOUR SWEET SELF.



### SUGAR CLEANSE

Wash + Prep

**Obsessed with... clean!** This total clean freak has a one-track mind: leaving hair fresh and ready for anything (without killing your colour).

**Sweet side...** A little sugar goes a long way for your best hair day ever.

**Workaholic...** Keeps going all day long to keep hair fresh, not greasy. Now that's BFF material.

**100ml** **300ml** **1000ml**  
RRP £4.95 £10.95 £22.95



### SUGAR RINSE

Detangle + Hydrate

**Got your back...** The sidekick that helps you out of any jam, from tangled tresses to frazzled frizzies.

**Fine hair, don't care...** It's so lightweight, it'll never steal your bounce.

**Gimme sugar...** A daily dose leaves hair ultra-shiny and super soft. How sweet is that?

**100ml** **300ml** **1000ml**  
RRP £5.95 £11.95 £23.95



### SUGAR TWIST™

Piecey + Beachy

**Effortlessly cool...** Your free-spirited pal with the model-off-duty vibe.

**Piece out...** When you want surfer-girl waves, this piecey, beachy cream takes you there in an instant.

**Text(ure) me...** Scrunch it in for looks that won't fall flat.

**75ml** **200ml**  
RRP £5.95 £11.95



### SUGAR SPRAY

Texture + Body

**Always amped...** This body booster's ready with a pick-me-up whenever you need it.

**Total softie...** Gives your hair texture and definition without making it stiff or crunchy.

**Makes waves—and plays it straight...**

Enjoy lush body, no matter how you style.

**100ml** **250ml**  
RRP £5.95 £11.95



### SUGAR CREAM

Sleek + Sculpted

**Has it together...** This smooth operator keeps strands from straying so your look stays sleek.

**Absolutely brilliant...** It's moisture-rich to give your hair plenty of shine.

**A little bit twisted...** Amazing for braids, twists, and knots.

**75ml** **200ml**  
RRP £5.95 £11.95



### SUGAR CONFECTION™

Hold + Control

**Totally in control...** Has what it takes to keep up-dos up and every hair in place.

**Work it...** Flexible hold lets you style, spray and style some more.

**Seal the deal...** A few final spritzes will keep your style going strong.

**100ml** **250ml**  
RRP £5.95 £11.95

FOLLOW US @PAULMITCHELLUK FOR STYLE INSPIRATION AND MORE.

#NEONSQUAD #STANDOUTSTYLE





VIBRANT COLOR  
FOR UP TO  
**9 WEEKS\***

PREVENTS  
THERMAL  
DAMAGE BY  
**86%\*\***

**88%**  
LESS  
BREAKAGE\*\*

**59%**  
MORE  
SHINE\*\*



# ULTIMATE COLOR REPAIR®

ANTI-FADE. THERMAL PROTECTION. VIBRANT.



## Ultimate Color Repair® Shampoo

Anti-Fade • Quinoa Repair

**What it does:** Gentle, sulfate-free cleanser protects, replenishes and helps repair colour-treated hair.

**How it works:** Quinoa Color Repair complex harnesses the high protein content of quinoa to lock in hair colour and repair strands from within. Sugar cane and lemon peel extracts add glossy shine and manageability, while powerful antioxidants help prevent damage.

**Added bonus:** A blend of natural extracts makes hair shiny, soft and manageable.

75ml	250ml	1000ml
RRP £7.95	£17.95	£39.95



## Ultimate Color Repair® Triple Rescue®

Thermal Protection • Condition • Shine

**What it does:** Dual-phase spray protects against excessive heat that can damage colour-treated hair and lead to dull, faded strands.

**How it works:** The top phase protects against excessive heat that can damage colour-treated hair and lead to dull, faded strands. The bottom phase conditions hair with Quinoa Color Repair complex, so hair looks healthy, shiny and vibrant. Shake well before use!

**Added bonus:** Leaves hair soft, smooth and manageable.

25ml	150ml
RRP £7.95	£18.50



## Ultimate Color Repair® Conditioner

Anti-Fade • Quinoa Repair

**What it does:** An ideal daily hydrator and detangler for colour-treated hair.

**How it works:** Quinoa Color Repair complex harnesses the high protein content of quinoa to lock in hair colour and repair strands from within. Shea butter, jojoba and soybean oil leave hair soft, shiny and healthy, while vitamins nourish and moisturize.

**Added bonus:** Powerful antioxidants provide UV protection to help prevent colour fade and damage.

75ml	200ml	1000ml
RRP £7.95	£18.50	£40.95



## Ultimate Color Repair® Mask

Anti-Fade • Intense Repair

**What it is:** An ultra-rich deep conditioning mask for colour-treated hair.

**What it does:** An intense dose of Quinoa Color Repair complex helps lock in hair colour and repair strands from within. Shea butter, jojoba and soybean oil leave hair soft, shiny and healthy, while vitamins deeply nourish and moisturize.

**Added bonus:** Powerful antioxidants help prevent colour fade and damage. Leaves hair vibrant and incredibly moisturized.

75ml	150ml	500ml
RRP £8.95	£21.95	£39.95



## Ultimate Color Repair® Bonus Bag

- Ultimate Color Repair® Shampoo 250ml
- Ultimate Color Repair® Conditioner 200ml
- Ultimate Color Repair® Triple Rescue® 25ml

RRP £38.95  
Usual RRP £44.40



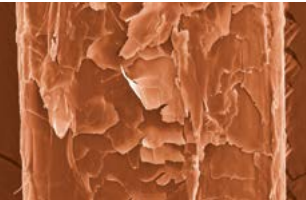
## Ultimate Color Repair® Mask Take Home<sup>SM</sup> Kit

- Ultimate Color Repair® Shampoo 75ml
- Ultimate Color Repair® Conditioner 75ml
- Ultimate Color Repair® Triple Rescue® 25ml
- Ultimate Color Repair® Mask 75ml

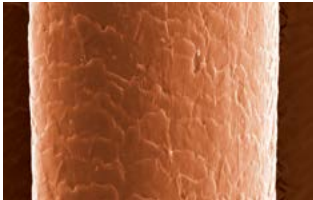
RRP £23.85  
Usual RRP £32.80

### SULFATE-FREE<sup>+</sup>

### QUINOA COLOR-LOCKING SYSTEM



Untreated cuticle before  
Ultimate Color Repair®



Treated cuticle after  
Ultimate Color Repair®


<sup>+</sup>When using the system of shampoo, conditioner and mask, as compared to untreated hair.  
Products were tested by an established, independent third-party laboratory.  
<sup>\*\*</sup>When using the complete Ultimate Color Repair® system.  
<sup>†</sup>Does not contain sodium laureth sulfate or sodium laurel sulfate





# BLONDE

BRIGHTEN. REPAIR. REBUILD.




**Forever Blonde® Shampoo**  
Sulfate-Free\* • KerActive Repair

**What it does:** Gently cleanses lightened and highlighted blonde hair while helping to repair damage and seal the cuticle.

**How it works:** Powered by exclusive KerActive protein and safflower oleosomes.

**Added bonus:** Helps keep blonde hair light, bright and healthy.

75ml	250ml	710ml
RRP £7.75	£16.95	£35.95




**Forever Blonde® Conditioner**  
Intense Hydration • KerActive Repair

**What it does:** Deeply hydrates and detangles lightened and highlighted blonde hair.

**How it works:** KerActive and safflower oleosomes help smooth and repair.

**Added bonus:** Helps subtly brighten blonde and highlighted hues.

75ml	200ml	710ml
RRP £7.50	£16.75	£36.50



**Blonde Bonus Bag**

- Forever Blonde® Shampoo 250ml
- Forever Blonde® Conditioner 200ml

RRP £28.95  
Usual RRP £33.70




**Forever Blonde® Dramatic Repair®**  
KerActive Damage Recovery

**What it does:** Smooths, strengthens and replenishes depleted blonde hair.

**How it works:** Loaded with KerActive protein, safflower oleosomes and macadamia nut oil to help penetrate, repair and moisturize weakened hair.

**Added bonus:** Lightweight yet powerful multitasking corrector specifically addresses the needs of lightened and highlighted hair.

25ml	150ml
RRP £7.50	£16.95




**Platinum Blonde Shampoo™**  
Brightens Blonde, Grey or White Hair

**What it does:** Banishes brassiness, softens strands, and adds shine in natural and colour-treated blondes.

**How it works:** Violet-tinted, colour-enhancing formula brings out the best in blonde, white and silver hair.

**Added bonus:** Conditioning ingredients and extracts hydrate hair and intensify shine.

300ml	1000ml
RRP £13.95	£33.25



**Blonde Take Home<sup>sm</sup> Kit**

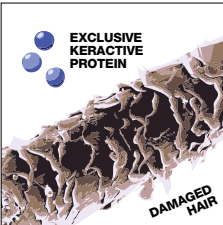
- Forever Blonde® Shampoo 75ml
- Forever Blonde® Conditioner 75ml
- Forever Blonde® Dramatic Repair® 25ml

RRP £19.95  
Usual RRP £22.75

SULFATE-FREE\*



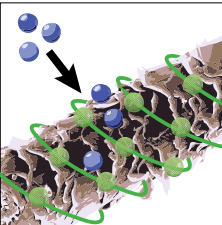
KERACTIVE IS AN ADVANCED DEVELOPMENT IN ACTIVATED KERATIN, WHICH ENABLES THE SPECIAL KERATIN MOLECULES TO “HUG” THE HAIR, ADDING LUSTROUS CONDITIONING AND A SMOOTH FEEL. CONSIDERED NATURE’S MOST EFFECTIVE DELIVERY SYSTEM, THE UNIQUE STRUCTURE OF SAFFLOWER OLEOSOMES ALLOWS THE OIL TO BE DELIVERED DIRECTLY ONTO THE HAIR SHAFT TO PROVIDE LONG-LASTING HYDRATION AND MOISTURE RETENTION.



Exclusive KerActive protein “hugs” the hair to help repair damage.



Conditioners and safflower oleosomes deliver rich plant oils to replenish lost moisture and nutrients.



KerActive penetrates the hair shaft to help rebuild, while safflower oleosomes deliver moisture and seal the cuticle.



The result is stronger, healthier hair with long-lasting hydration and shine.

BRIGHTENS, REPAIRS AND REBUILDS BLONDE HAIR.

\*Does not contain sodium laureth sulfate or sodium laurel sulfate

# CURLS

DEFINE. FIGHT FRIZZ. DETANGLE.



## Spring Loaded® Frizz-Fighting Shampoo Zero Frizz

**What it does:** Rich lather gently cleanses curls without roughing up the cuticle to fight frizz from the start.

**How it works:** Mild, soothing blend of surfactants gently cleanses curls.

**Added bonus:** Ultra-calming

75ml	250ml	710ml
RRP £7.75	£16.95	£35.95



## Spring Loaded® Frizz-Fighting Conditioner Rinse-Out Curl Detangler

**What it does:** Creamy rinse-out conditioner tackles tangles, de-frizzes and defines curls.

**How it works:** Replenishes moisture with jojoba oil and hydrating natural extracts.

**Added bonus:** Leaves hair soft, smooth and frizz-free.

75ml	200ml	710ml
RRP £7.50	£16.75	£36.50



## Full Circle Leave-In Treatment® Frizz-Free Curl Therapy

**What it does:** Lightweight conditioning treatment hydrates, detangles, tames frizz and won't weigh hair down.

**How it works:** Creamy formula smoothes, detangles and replenishes every curl.

**Added bonus:** Hydrates thirsty locks and helps protect against damage.

75ml	200ml
RRP £7.50	£16.95



## Ultimate Wave® Beachy Texture Cream-Gel

**What it does:** Forms, separates and adds loads of texture to create sexy, tousled beach waves.

**How it works:** Soothing and smoothing mushroom extract fights frizz.

**Added bonus:** Humidity-resistant for perfectly imperfect, frizz-free styles.

75ml	150ml
RRP £7.50	£13.25



## Twirl Around® Crunch-Free Curl Definer

**What it does:** Dual formula defines, separates and tames unruly curls and waves without frizz or crunchiness.

**How it works:** Crunch-free fixative leaves curls soft and touchable.

**Added bonus:** Helps curls retain their shape and bounce all day long.

150ml
RRP £21.25



## Curls Bonus Bag

- Spring Loaded® Frizz-Fighting Shampoo 250ml
- Spring Loaded® Frizz-Fighting Conditioner 200ml

RRP £28.95
Usual RRP £33.70

# CLARIFYING

FRESH. DEEP. CLEAN.



## Shampoo Two® Deep Cleansing

**What it does:** Colour-safe formula deeply cleanses oily hair and scalp, leaving hair fresh, shiny and full of body.

**How it works:** Wheat-derived conditioners boost body and shine.

**Added bonus:** Helps minimize oil production, so hair becomes less oily over time.

100ml	300ml	500ml	1000ml
RRP £5.50	£10.95	£14.95	£24.75



## Shampoo Three® Removes Chlorine and Impurities

**What it does:** Removes dulling build-up from hair, strengthens strands and minimizes future buildup.

**How it works:** Deep cleansers remove chlorine, iron and minerals.

**Added bonus:** Helps prevent swimmers' "chlorine green."

100ml	300ml	500ml	1000ml
RRP £5.50	£11.95	£16.95	£24.75

DEEPLY CLEANSSES AND PURIFIES HAIR  
FROM THE INSIDE OUT.











# COLOR CARE

PROTECTED. HEALTHY. CONDITIONED.



## Color Protect® Daily Shampoo Gentle Cleanser

**What it does:** Cleanses colour-treated hair while it moisturizes, strengthens and boosts shine.

**How it works:** Sunflower extract provides intense UV protection, while conditioning agents and extracts hydrate and add shine.

**Added bonus:** Helps colour last longer by shielding it from the sun.

	100ml	300ml	500ml	1000ml
RRP	£5.95	£11.75	£15.95	£26.50



## Color Protect® Reconstructive Treatment

Repairs and Protects

**What it does:** Repairs, conditions and hydrates colour-treated hair, and helps prevent damage and split ends.

**How it works:** Sunflower extract shields hair from the sun, while conditioning extracts leave locks hydrated and shiny.

**Added bonus:** Delivers an intense dose of UVA and UVB protection, so colour lasts longer.

	150ml	500ml
RRP	£15.25	£39.50



## Color Protect® Daily Conditioner

Detangles and Repairs

**What it does:** Detangles and smoothes colour-treated hair, so locks look and feel soft and hydrated.

**How it works:** Sunflower extract protects hair from sun damage, while conditioning extracts moisturize and boost shine.

**Added bonus:** Provides UVA and UVB protection, and helps prevent colour from fading.

	100ml	300ml	500ml	1000ml
RRP	£6.75	£14.50	£20.95	£32.75



## Color Protect® Locking Spray

UV Protection

**What it does:** Makes hair look conditioned and super shiny while it locks in and extends the life of hair colour.

**How it works:** Sunflower extract provides sun protection and keeps colour from fading, while conditioning agents and extracts add moisture and shine.

**Added bonus:** Powerful UVA and UVB protection helps prevent colour fade.

	250ml
RRP	£14.50



## Color Care Bonus Bag

- Color Protect® Daily Shampoo 300ml
  - Color Protect® Daily Conditioner 300ml
- RRP £21.95
- Usual RRP £26.25



## Color Care Take Home<sup>sm</sup> Kit

- Color Protect® Daily Shampoo 100ml
  - Color Protect® Daily Conditioner 100ml
  - Color Protect® Locking Spray 100ml
- RRP £16.95
- Usual RRP £20.45

PROTECTS AND MAINTAINS COLOR-TREATED HAIR.

\*Product names and design may vary pending ongoing packaging update.



# EXTRA-BODY

LUSH. FULL. BOUNCY.



## Extra-Body Daily Shampoo®

Thickens and Volumizes

**What it does:** Gently cleanses and volumizes fine to normal hair.

**How it works:** Panthenol boosts body and helps repair damage, while wheat-derived ingredients help protect and leave hair silky smooth.

**Added bonus:** Helps repair worn-down locks, boosts body and maximizes shine.

100ml	300ml	500ml	1000ml
RRP £5.95	£11.75	£15.95	£26.50



## Extra-Body Daily Rinse®

Thickens and Detangles

**What it does:** Detangles and adds volume to fine hair, leaving locks full of body, bounce and shine.

**How it works:** Panthenol boosts body and helps repair damage, while wheat-derived ingredients help prevent damage and leave hair silky smooth.

**Added bonus:** Helps repair and prevent damage caused by blow-drying and styling.

100ml	300ml	500ml	1000ml
RRP £6.75	£14.00	£20.95	£32.75



## Extra-Body Sculpting Foam®

Thickening Foam

**What it does:** Creates lightweight body and volume for fine hair, adding flexible control, amplifying shine and locking in moisture.

**How it works:** Conditioning formula provides extra body, fullness and control, while super-emollient ingredients leave hair manageable and shiny.

**Added bonus:** Preps hair for a gorgeous, full-body blowout.

59ml	200ml	500ml
RRP £8.35	£12.95	£26.50



## Extra-Body Finishing Spray®

Volume and Shine

**What it does:** Secures hard-to-hold hair, fights frizz, boosts volume and adds shine.

**How it works:** Panthenol and hydrolyzed wheat protein build body and provide a bodifying boost, so hair looks and feels thicker.

**Added bonus:** Dries instantly without flaking or stickiness.

125ml	300ml
RRP £8.35	£15.50



## Extra Body Bonus Bag

- Extra-Body Daily Shampoo® 300ml
- Extra-Body Daily Rinse® 300ml

RRP £21.95

Usual RRP £26.25



## Extra-Body Daily Boost®

Root Lifter

**What it does:** Gives fine hair a boost of volume at the roots.

**How it works:** Panthenol protects fragile strands and adds volume.

**Added bonus:** Precision sprayer delivers extra “oomph” right where you need it.

100ml	250ml	500ml
RRP £8.35	£16.75	£26.50



## Extra-Body Sculpting Gel®

Thickening Gel

**What it does:** Pumps up the volume and provides flexible hold for fine hair, creating brush-through body without stickiness or flaking.

**How it works:** Flexible, thickening and body-building ingredients create fullness and manageability.

**Added bonus:** Makes locks shiny and manageable.

200ml	500ml
RRP £11.95	£24.50



## Thicken Up®

Styling Liquid

**What it does:** Makes thin strands look and feel thicker without a heavy product feel while adding shine, definition and soft memory.

**How it works:** Thickening conditioners and clean styling agents create body and definition, while strengthening ingredients and UV protection help protect fine hair.

**Added bonus:** Shields hair from damaging UV rays.

25ml	200ml
RRP £6.60	£17.50



## Extra-Body Firm Finishing Spray®

Extreme Hold, Maximum Volume

**What it does:** Provides all-day hold and maximum volume with high shine, fullness and texture.

**How it works:** Thickening ingredients grip every strand for enhanced volume and texture.

**Added bonus:** Fights frizz in any climate.

125ml	300ml
RRP £8.95	£15.50

GIVES FINE HAIR A WEIGHTLESS BOOST.





# MOISTURE

HYDRATED. REVIVED. REPLENISHED.



## Instant Moisture® Daily Shampoo

Hydrates and Revives

**What it does:** Color-safe formula cleanses, hydrates thirsty hair, plumps up skinny strands and helps repair damage.

**How it works:** Instant Moisture Complex provides superior conditioning and UV protection, while panthenol adds body and helps repair damage from the inside out.

**Added bonus:** Helps protect vulnerable hair from the sun.

100ml	300ml	500ml	1000ml
RRP £5.95	£11.75	£15.95	£26.50



## Awapuhi Moisture Mist® Hydrating Spray

**What it does:** Deeply hydrates thirsty hair and revives dry, tired skin.

**How it works:** Lactic acid and Hawaiian awapuhi provide deep moisture and enhanced shine. Spirulina and plankton extracts rich in amino acids and vitamins make hair soft, hydrated and silky smooth, while sodium PCA balances moisture.

**Added bonus:** Reactivates styling products in hair, making it perfect for quick touch-ups.

100ml	250ml	500ml
RRP £5.85	£10.95	£18.25



## Instant Moisture® Daily Treatment

Hydrates and Revives

**What it does:** Hydrates and detangles moisture-starved strands, making hair shiny and manageable.

**How it works:** Soy proteins, shea butter and Instant Moisture Complex moisturize, strengthen and add elasticity. Panthenol builds body and repairs damage from the inside out.

**Added bonus:** Strengthens the cuticle and improves elasticity.

100ml	200ml	500ml	1000ml
RRP £8.95	£15.50	£26.50	£35.25



## Super-Charged Moisturiser Intense Hydrating Treatment

**What it does:** Delivers an intense dose of moisture for dehydrated hair, boosts shine and improves elasticity.

**How it works:** Panthenol, soy proteins and vitamin E provide hydration and protection.

**Added bonus:** Makes hair look and feel healthier and more manageable.

100ml	200ml	500ml
RRP £8.95	£16.95	£31.25



## Moisture Bonus Bag

- Instant Moisture® Daily Shampoo 300ml
- Instant Moisture® Daily Treatment 200ml

RRP £22.95  
Usual RRP £27.25

# KIDS

GENTLE. SOOTHING. SOFT.



## Baby Don't Cry® Shampoo Gentle, Tearless Wash

**What it does:** Gently cleanses and soothes hair and scalp.

**How it works:** Mild cleansers and a neutral pH create a tearless formula. A unique blend of extracts helps hydrate and prevent moisture loss, while chamomile and cornflower extract calm and soothe.

**Added bonus:** The tearless formula is ideal for children of all ages.

300ml	500ml	1000ml
RRP £10.95	£14.95	£24.75



## Taming Spray® Ouch-Free Detangler

**What it does:** Easily detangles dry or damp hair.

**How it works:** Leaves hair fresh and full of body.

**Added bonus:** Smoothes static and helps control children's "morning hair."

250ml
RRP £9.95

GENTLY CLEANSSES AND DETANGLES SENSITIVE STRANDS.





# ORIGINAL

CLASSIC. CONDITIONED. BALANCED.



## Shampoo One®

Gentle Wash

**What it does:** Gently cleanses, improves manageability, adds deep shine and enhances hair's appearance.

**How it works:** Panthenol and wheat-derived conditioners improve the surface texture and manageability.

**Added bonus:** It's extremely mild, making it a great choice for colour-treated hair.

	100ml	300ml	500ml	1000ml
RRP	£5.50	£10.95	£14.95	£24.75



## The Conditioner™

Leave-In Moisturizer

**What it does:** Smoothes hair, reduces static, prevents dryness and gets weary strands back in shape.

**How it works:** Hawaiian awapuhi helps balance moisture, while wheat-derived conditioners improve hair texture.

**Added bonus:** Doubles as an excellent moisturizer for skin.

	100ml	300ml	500ml	1000ml
RRP	£5.95	£14.50	£21.25	£31.75



## Hair Repair Treatment®

Strengthens and Rebuilds

**What it does:** Helps repair weak, damaged hair and improves strength, texture and elasticity.

**How it works:** Wheat-derived conditioners and amino acids strengthen, add elasticity and boost shine. Essential fatty acids, vitamins and wheat proteins prevent breakage.

**Added bonus:** Provides a powerful dose of moisture and rebuilds inner strength.

	200ml
RRP	£15.95



## Awapuhi Shampoo® (Original)

Super Rich Wash

**What it does:** Thoroughly cleanses any hair type, including colour-treated hair. Helps balance moisture and add volume.

**How it works:** Hawaiian awapuhi helps prevent moisture loss. Special conditioners help improve hair texture.

**Added bonus:** Multitasks as a luxurious body wash.

	100ml	300ml	500ml	1000ml
RRP	£5.50	£10.95	£14.95	£24.75



## The Detangler®

Super Rich Conditioner

**What it does:** Detangles and conditions medium to coarse hair as it smoothes, softens and prevents moisture loss.

**How it works:** Grape seed oil provides instant conditioning, detangling and shine. Carrot extract, rich in beta-carotene, acts as a natural UV absorber.

**Added bonus:** Guards vulnerable strands from sun damage.

	100ml	300ml	500ml	1000ml
RRP	£5.95	£14.50	£21.25	£31.75

CLEANSSES AND CONDITIONS ANY HAIR TYPE OR TEXTURE.

# SMOOTHING

SMOOTH. SILKY. SHINY.



## Super Skinny® Daily Shampoo

Smoothes and Softens

**What it does:** Colour-safe formula cleanses and smooths hair, making rebellious locks softer and more manageable.

**How it works:** Super Skinny Complex and mild surfactants cleanse hair without stripping or plumping.

**Added bonus:** Reduces drying time and speeds up styling.

100ml	300ml	1000ml
RRP £5.60	£12.25	£28.50



## Super Skinny® Daily Treatment

Smoothes and Softens

**What it does:** Smooths and softens strands while helping to repair and prevent damage.

**How it works:** Heat-activated conditioners and thermal protectants help repair hair and prevent surface damage.

**Added bonus:** Speeds up drying and styling to get you out the door faster.

100ml	300ml	1000ml
RRP £7.95	£15.50	£38.75



## Super Skinny® Serum

Smooths and Conditions

**What it does:** Smooths, conditions and seals strands, leaving hair silky, shiny and frizz-free in any weather.

**How it works:** Lightweight silicones smooth, condition and seal hair with added shine.

**Added bonus:** Speeds up drying so you get silky-smooth results in less time.

25ml	150ml	250ml
RRP £6.50	£19.95	£27.25



## Gloss Drops®

Frizz-Free Polish

**What it does:** Fights frizz, resists humidity and creates brilliant shine, leaving hair soft and silky.

**How it works:** Lightweight silicones smooth hair's surface.

**Added bonus:** Highly concentrated can be added to your favorite styling products for a boost of shine.

100ml
RRP £17.75



## Super Skinny® Relaxing Balm™

Smooths and Controls

**What it does:** Leaves even the most rebellious locks shiny and manageable.

**How it works:** Super Skinny complex displaces water and constricts hair to speed up drying and styling, while humidity-resistant styling agents provide memory in any weather.

**Added bonus:** Helps hair dry faster, fights frizz and delivers incredible memory.

25ml	200ml
RRP £6.25	£17.75



## Straight Works®

Smooths and Controls

**What it does:** Provides the perfect balance of slip and hold to transform textured hair and maximize softness, manageability and shine.

**How it works:** Lightweight humectants and conditioners leave hair soft and manageable.

**Added bonus:** Controls texture and creates a silky-smooth finish.

100ml	200ml
RRP £12.25	£19.25



## Smoothing Bonus Bag

- Super Skinny® Daily Shampoo 300ml
- Super Skinny® Daily Treatment 300ml

RRP £22.95  
Usual RRP £26.75



# STRENGTH

STRONG. HEALTHY. RESILIENT.



## Super Strong® Daily Shampoo

Strengthens and Protects

**What it does:** Mild, colour-safe surfactants gently cleanse and repair damaged strands, enhancing hair's look and feel.

**How it works:** Super Strong complex rebuilds hair from within, while conditioning agents improve texture and add shine.

**Added bonus:** Helps protect and prevent further damage.

	100ml	300ml	1000ml
RRP	£6.50	£12.95	£29.50



## Super Strong® Daily Conditioner

Rebuilds and Protects

**What it does:** Colour-safe formula repairs and protects worn-down locks, leaving hair soft, smooth and moisturized.

**How it works:** Super Strong complex rebuilds the internal structure of hair, while canola, soybean and cornstarch soften and smooth.

**Added bonus:** Helps shield strands from damaging UV rays.

	100ml	300ml	1000ml
RRP	£8.85	£16.95	£39.50



## Super Strong® Treatment

Rebuilds and Restores

**What it does:** Deep treatment strengthens and rebuilds troubled tresses, improving elasticity and protecting from further damage.

**How it works:** Super Strong complex rebuilds the internal structure of hair, while rich lipid conditioners enhance flexibility. Wheat proteins and amino acids improve strength and elasticity.

**Added bonus:** Makes hair more manageable and easier to style.

	100ml	200ml
RRP	£10.50	£19.95



## Super Strong® Liquid Treatment™

Strengthens and Repairs

**What it does:** Repairs hair from the inside out and helps seal split ends for smooth, healthy-looking results.

**How it works:** Super Strong complex, marine extracts and vegetable proteins replace lost minerals, and proteins replenish every strand.

**Added bonus:** Strengthens strands up to 60% with everyday use.

	100ml	250ml
RRP	£9.85	£19.95



## Strength Bonus Bag

- Super Strong® Daily Shampoo 300ml
- Super Strong® Daily Conditioner 300ml

RRP £23.95

Usual RRP £29.90

STRENGTHENS AND REBUILDS WORN-DOWN, DAMAGED HAIR.







# EXPRESS DRY

FAST. CLEAN. DRY.



## Dry Wash®

### Express Dry Waterless Shampoo

**What it does:** Dry formula instantly leaves hair looking and feeling freshly washed with a clean scent.

**How it works:** Ultra-fine, colourless formula leaves no residue; ideal for all hair types and colors.

**Added bonus:** Powerful directional spray refreshes and revives lifeless hair while extending the life of any style.

**50ml**

RRP £10.75

**252ml**

£18.50



## Stay Strong®

### Express Dry Strong Hold Hairspray

**What it does:** Strong-hold spray offers the ultimate style support while remaining workable.

**How it works:** Humidity-resistant ingredients help fight frizz and flyaways.

**Added bonus:** Weightless, ultra-dry formula provides maximum control and volume.

**50ml**

RRP £8.25

**360ml**

£18.50

# EXPRESS STYLE

FAST. CLEAN. FLEXIBLE.



## Fast Form®

### Cream Gel

**What it does:** Soothes, tames and secures any texture with long-lasting hold; creates great detail and helps reduce drying time.

**How it works:** Shea butter, evening primrose, avocado and jojoba oils boost shine and manageability.

**Added bonus:** Works wonders on curls with defined, frizz-free results; the versatile formula can be applied to wet or dry hair.

**25ml**

RRP £6.75

**200ml**

£19.25



## Hot Off The Press®

### Thermal Protection Hairspray

**What it does:** Protects fragile strands from damage caused by heat styling also boosts hair's strength, fights frizz and provides flexible hold.

**How it works:** Rice hull extract builds a lightweight barrier between hair and heat styling tools, while wheat proteins deliver an extra dose of strength.

**Added bonus:** Adds great memory for effortless curls or smoothing with a hot iron.

**200ml**

RRP £16.95



## Quick Slip™

### Styling Cream

**What it does:** Provides flexible hold, adds definition, conditions and helps protect hair.

**How it works:** Softening conditioners and UV protection leave hair looking and feeling healthy.

**Added bonus:** Speeds up drying time and shields vulnerable strands from the sun.

**25ml**

RRP £6.70

**150ml**

£17.25



## Round Trip®

### Liquid Curl Definer

**What it does:** Conditions and protects textured tresses and adds weightless bounce and detail to curls and waves.

**How it works:** Styling agents derived from cornstarch add weightless detail. Panthenol and magnesium sulfate condition, protect and strengthen curls.

**Added bonus:** Reduces drying time to get you on your way faster.

**25ml**

RRP £6.80

**200ml**

£14.95



## Hold Me Tight™

### Finishing Spray

**What it does:** Secures any style with a strong, long-lasting hold and dries fast without stiffness or build-up.

**How it works:** Powerful, yet flexible, polymers provide strong hold. Vegetable-derived conditioners and shine enhancers impart high shine and minimize static.

**Added bonus:** Enhances shine and reduces flyaways.

**300ml**

RRP £16.75





# SOFT STYLE

CLEAN. TOUCHABLE. SHINE.



## Soft Sculpting Spray Gel®

Flexible Styling Gel

**What it does:** Boosts body and provides flexible control, creating a soft, natural-looking finish.

**How it works:** Emollient conditioners and styling agents provide a natural finish.

**Added bonus:** Adds incredible shine and reflection.

**100ml    250ml    500ml**

RRP £6.25    £10.95    £16.75



## Soft Spray®

Finishing Spray

**What it does:** Secures strands with a natural, touchable finish and an easy-to-brush-through hold.

**How it works:** Soft, flexible styling agents provide memory and hold.

**Added bonus:** Reactivates with heat or water for easy restyling.

**250ml    500ml**

RRP £11.95    £17.75



## Foaming Pommade®

Texture Polish

**What it does:** Provides light control for wavy, curly or unruly hair, creating head-turning shine and reflection.

**How it works:** Premium white oils and natural extracts smooth the surface and turn up the shine.

**Added bonus:** Smooths, softens and conditions textured tresses.

**150ml    250ml**

RRP £17.50    £24.95



## The Shine™

Spray-On Polish

**What it does:** Delivers show-stopping shine for any hair type and creates a silky-smooth texture.

**How it works:** Lightweight silicones and a blend of natural extracts enhance shine.

**Added bonus:** Light mist pump spray allows for a light application.

**125ml**

RRP £18.25



## The Cream®

Styling Conditioner

**What it does:** Provides light hold and builds body for any hair type; moisturizes, strengthens and protects hair from everyday damage.

**How it works:** Moisturizing, emollient conditioners and panthenol hydrate and safeguard hair.

**Added bonus:** Helps shield locks from damaging UV rays.

**100ml    200ml**

RRP £13.75    £21.25



## Heat Seal®

Thermal Protection and Style

**What it does:** Guards strands from damage caused by heat styling; builds body, provides light hold and enhances shine.

**How it works:** Clean, flexible styling agents and essential fatty acids add shine and memory.

**Added bonus:** Humidity resistance ensures a longer-lasting style curly or straight.

**100ml    250ml**

RRP £7.95    £15.75

CREATES NATURAL LOOKS  
WITH A LIGHT, TOUCHABLE HOLD.



# FLEXIBLE STYLE

WORKABLE. VERSATILE. TEXTURE.

## ESP®

### Elastic Shaping Paste



**What it does:** Creates bendable texture with flexible hold and can shape multiple styles - use it to spike, twist, bend, separate or define.

**How it works:** Infused with beeswax for pliability.

**Added bonus:** Highly concentrated, a little goes a long way.

**50g**

RRP £17.25

## Hair Sculpting Lotion™

### Styling Liquid



**What it does:** Delivers medium-hold, long-lasting memory and reactivates with heat or water for quick and easy restyling.

**How it works:** Styling and bodifying agents, combined with panthenol, add texture and memory. Wheat-derived conditioners control static.

**Added bonus:** Smoothes the surface of the hair and minimizes flyaways.

**100ml**

RRP £5.75

**300ml**

£9.95

**500ml**

£15.25

## Wax Works®

### Extreme Texture



**What it does:** Creates bold texture and definition, and makes hair super shiny.

**How it works:** Flexible resins and vegetable-based conditioners define and add texture.

**Added bonus:** Strong enough for hair that's hard to control.

**100ml**

RRP £12.75

**200ml**

£19.50

## Fast Drying Sculpting Spray™

### Working Spray



**What it does:** Adds body, flexible control and shine for any finished style.

**How it works:** Flexible styling agents quickly reactivate with heat or water.

**Added bonus:** Perfect medium-hold finishing spray.

**100ml**

RRP £6.50

**250ml**

£13.75

**500ml**

£21.95

**1000ml**

£32.95

## Super Sculpt™

### Quick-Drying Styling Glaze



**What it does:** Provides flexible control and long-lasting memory while adding body and maximizing shine.

**How it works:** Conditioning, bodifying agents and panthenol add volume and memory.

**Added bonus:** Dries fast so you get the results you want in less time.

**100ml**

RRP £6.25

**250ml**

£10.95

**500ml**

£17.75

## Re-Works®

### Texture Cream



**What it does:** Creates clean, moveable texture and allows for easy restyling.

**How it works:** Wheat-derived conditioners create pliable texture.

**Added bonus:** Can be used on wet hair for a natural finish or on dry hair for bold texture.

**150ml**

RRP £15.75

## Spray Wax™

### Flexible Texture



**What it does:** Creates bendable texture and delivers a satin finish.

**How it works:** Non-oily wax and sunflower seed oil create a satin finish; flexible beeswax adds pliability.

**Added bonus:** Light aerosol mist is easy to apply to all hair types and lengths.

**125ml**

RRP £16.50

## Super Clean Spray®

### Finishing Spray



**What it does:** Adds fullness, texture and flexible hold; dries fast with clean, run-your-fingers-through-it results.

**How it works:** Flexible stylers and conditioning agents add body and shine.

**Added bonus:** Fine mist spray provides a dry application.

**300ml**

RRP £14.75

## Sculpting Foam™

### Conditioning Foam



**What it does:** Enhances texture with long-lasting memory that controls frizz, adds shine and balances moisture.

**How it works:** Styling and bodifying agents, combined with panthenol, provide touchable hold. Emollient conditioners smooth the surface of the hair.

**Added bonus:** Creates gorgeous, crunch-free, defined curls.

**200ml**

RRP £11.95

**500ml**

£25.25





# FIRM STYLE

FINISHED. DEFINED. HOLD.



## Super Clean Sculpting Gel®

Maximum Control

**What it does:** Provides maximum control for hard-to-hold styles and delivers high shine and bold texture.

**How it works:** Firm-holding styling ingredients lock in any look.

**Added bonus:** Excellent for wet looks.

**200ml    500ml**

RRP £11.95    £23.75



## Freeze and Shine

### Super Spray®

Finishing Spray

**What it does:** Provides powerful hold and memory, and creates a shiny finish.

**How it works:** Firm-holding styling ingredients lock in your look.

**Added bonus:** Excellent for medium to coarse hair types.

**100ml    250ml    500ml    1000ml**

RRP £7.35    £13.95    £21.95    £34.25



## XTG®

Extreme Thickening Glue

**What it does:** Delivers maximum thickness and bold texture, and dries fast for quick and easy styling.

**How it works:** Firm styling ingredients are ideal for extreme styles.

**Added bonus:** Locks in any look with a long-lasting hold.

**100ml**

RRP £14.95



## Dry Wax™

Texture and Definition

**What it does:** Defines and controls any texture, and creates clean, “lived in” looks.

**How it works:** Emollient waxes and softening agents create pliable styles.

**Added bonus:** Delivers long-lasting hold with a moveable finish.

**50g**

RRP £15.50



## Super Clean Extra®

Finishing Spray

**What it does:** Provides firm hold, boosts body and adds shine.

**How it works:** Firm-hold stylers and conditioning ingredients add fullness and shine.

**Added bonus:** Dries fast for quick and easy styling.

**125ml    300ml**

RRP £7.10    £14.75

CREATES BOLD LOOKS WITH A  
STRONG, LONG-LASTING HOLD.



# TEA TREE SPECIAL

TINGLE. INVIGORATE. RENEW.



## Tea Tree Special Shampoo®

Invigorating Cleanser

**What it does:** Special ingredients and tea tree oil rid hair of impurities and leave hair full of vitality and luster.

**How it works:** Natural tea tree oil, peppermint and lavender invigorate the scalp and leave hair smelling great.

**Added bonus:** The refreshing tingle wakes up weary hair and spirits.

75ml	300ml	1000ml
RRP £5.50	£15.75	£35.95



## Tea Tree Special Conditioner®

Invigorating Conditioner

**What it does:** Instantly detangles, softens, smoothes and renews worn-out locks.

**How it works:** Natural tea tree oil, peppermint and lavender invigorate the scalp and leave hair smelling great.

**Added bonus:** Helps prevent moisture loss.

75ml	300ml	1000ml
RRP £5.50	£16.75	£38.75



## Tea Tree Hair & Scalp Treatment®

Invigorating and Soothing

**What it does:** Reconditions, repairs and protects hair while moisturizing strands and soothing the scalp.

**How it works:** Soy proteins, panthenol, vitamin E and shea butter repair and protect, while willow bark helps soothe troubled skin.

**Added bonus:** Natural tea tree oil, peppermint and lavender leave hair smelling great.

200ml	500ml
RRP £18.25	£31.75



## Tea Tree Shaping Cream™

Strong Flexible Texture

**What it does:** Whips hair into shape with great texture and definition while providing strong, flexible styling power and long-lasting hold.

**How it works:** Mesh-like fibres define and separate. Botanical ingredients invigorate and leave hair smelling great.

**Added bonus:** Dries down to a clean, matte finish.

85g

RRP £16.75



## Tea Tree Grooming Pomade®

Flexible Hold and Shine

**What it does:** Provides old-school polish with a modern kick by shaping, controlling and defining hair with tons of shine.

**How it works:** Flexible resins and vegetable-based conditioners soften and control, while a burst of cool mint, tea tree and citrus refreshes and revives.

**Added bonus:** Great for wavy or curly hair types.

85g

RRP £16.75



## Tea Tree Firm Hold Gel®

Maximum Hold and Shine

**What it does:** Clean, flake-free gel provides maximum control with a refreshing fragrance, thickening hair and locking the style in place.

**How it works:** Styling ingredients help your style stay put, while a burst of cool mint, tea tree and citrus refreshes and revives.

**Added bonus:** Versatile formula can be applied to wet or dry hair.

75ml

200ml

RRP £6.50

£14.25



## Tea Tree Styling Gel®

Body and Shine

**What it does:** Locks in style with shine, body and manageability; the flexible hold allows you to rework any style.

**How it works:** Styling ingredients and conditioners shape hair with loads of shine, while tea tree oil, peppermint and lavender invigorate the senses.

**Added bonus:** Versatile formula can be applied to wet or dry hair.

75ml

200ml

RRP £6.50

£14.25



## Tea Tree Styling Wax®

Definition and Control

**What it does:** Creates flexible hold and texture that won't quit, making hair shiny and defined with loads of control.

**How it works:** Flexible styling ingredients and vegetable-based conditioners define and add shine, while tea tree oil, peppermint and lavender awaken the senses.

**Added bonus:** Great for short hair and piecey, layered looks.

200ml

RRP £19.95



## Tea Tree Body Bar®

Cleansing and Shaving

**What it does:** Cleanses and soothes naturally with invigorating tea tree oil.

**How it works:** Enriched with parsley flakes to gently exfoliate. Tea tree oil is a natural antiseptic and disinfectant known for its healing properties.

**Added bonus:** It's a great shaving companion.



150g

RRP £8.50

## Tea Tree Hand Soap™

Refreshing Deep Cleanser

**What it does:** Washes away dirt and grime as it soothes and invigorates.

**How it works:** Tea tree oil, peppermint and lavender refresh the senses.

**Added bonus:** Tea tree oil is a natural antiseptic and germicide with healing properties.



300ml

RRP £10.50

1000ml

£22.95

## Tea Tree Shave Gel®

Refreshing Foaming Gel

**What it does:** The rich foam cools skin and provides a clean, close shave, making skin refreshed and renewed.

**How it works:** Special skin conditioners help soothe and protect, while tea tree oil, peppermint and lavender awaken the senses.

**Added bonus:** Moisturizes to help protect from razor burn.



200ml

RRP £11.95

## Tea Tree Aromatic Oil

**What it does:** Helps treat minor acne and skin irritations, relieves itching and helps reduce muscle pain.

**How it works:** Tea Tree oil is a natural antiseptic known for its healing properties.

**Added bonus:** Add a few drops to Tea Tree Hair and Body Moisturizer® for an invigorating massage.



10ml

RRP £12.75

## Tea Tree Special Bonus Bag

- Tea Tree Special Shampoo® 300ml
- Tea Tree Special Conditioner® 300ml



RRP £27.50

Usual RRP £32.50

DISCOVER THE NATURAL MAGIC OF TEA TREE.



# TEA TREE LEMON SAGE

AWAKEN. REFRESH. ENERGIZE.




**Lemon Sage Thickening Shampoo®**  
Energizing Body Builder

**What it does:** This zesty formula plumps up fine strands, so hair looks and feels clean, thick and healthy.

**How it works:** Thickening agents boost volume, while panthenol strengthens every strand.

**Added bonus:** Helps strengthen and protect against split ends. Uplifting lemon, sage, peppermint and tea tree refresh mind, spirit and hair.

75ml	300ml	1000ml
RRP £5.50	£15.75	£35.95



**Lemon Sage Thickening Conditioner®**  
Energizing Body Builder

**What it does:** Lightweight formula conditions, boosts volume, detangles and protects.

**How it works:** Thickening agents boost volume, while lightweight conditioners protect and add shine.

**Added bonus:** Reduces static and smoothes snarls.

75ml	300ml	1000ml
RRP £5.50	£16.75	£38.75



**Lemon Sage Thickening Spray®**  
Lightweight Style Booster

**What it does:** Pumps up skinny strands and grips fine hair for added control with a fresh, no-product feel.

**How it works:** Panthenol and thickening ingredients add volume, while high-performance styling resins provide control.

**Added bonus:** Offers humidity resistance and UV protection.

75ml	200ml
RRP £8.50	£14.95



**Lemon Sage Bonus Bag**

- Lemon Sage Thickening Shampoo® 300ml
- Lemon Sage Thickening Conditioner® 300ml

RRP £27.50  
Usual RRP £32.50

# TEA TREE LAVENDER MINT

CALM. COOL. QUENCH.



**Lavender Mint Moisturizing Shampoo™**  
Hydrating and Calming

**What it does:** This calming quencher cleanses, soothes and replenishes dry, unruly hair.

**How it works:** Moisture-rich conditioners and amino acids improve strength, shine and manageability, while calming lavender, mint and tea tree soothe mind and spirit.

**Added bonus:** The dreamy scent puts hair and mind at ease.

75ml	300ml	1000ml
RRP £5.50	£15.75	£35.95



**Lavender Mint Moisturizing Conditioner™**  
Hydrating and Calming

**What it does:** This soothing quencher hydrates, detangles, softens and replenishes dry, thirsty hair.

**How it works:** Ultra-rich conditioners hydrate moisture-starved hair, while calming lavender, mint and tea tree soothe mind and spirit.

**Added bonus:** The dreamy scent puts hair and mind at ease.

75ml	300ml	1000ml
RRP £5.50	£16.75	£38.75



**Lavender Mint Moisturizing Bonus Bag**

- Lavender Mint Moisturizing Shampoo™ 300ml
- Lavender Mint Moisturizing Conditioner™ 300ml

RRP £27.50  
Usual RRP £32.50





SCALP  
CARE

**85% INCREASED**  
**HAIR VOLUME AND STRENGTH\***  
**REPORTED**

\*Based on an 8 week clinical study on 28 people conducted by an independent laboratory. Results may vary.

# TEA TREE SCALP CARE

STIMULATE. STRENGTHEN. REGENERATE.

## Scalp Care Anti-Thinning Shampoo



For Fuller, Stronger Hair

**What it does:** Colour-safe cleanser gently removes impurities to prime the scalp for stronger, thicker-looking hair.

**How it works:** Exclusive Regeniplex® blend contains Kakadu plum, pea peptides, clover flower, turmeric and ginseng to stimulate the scalp and provide fuller, thicker hair.

**Added bonus:** Helps add volume by thickening each strand.

100ml	300ml	1000ml
RRP £7.25	£16.95	£37.95

## Scalp Care Anti-Thinning Conditioner



For Fuller, Stronger Hair

**What it does:** Lightweight conditioner detangles fine, fragile hair.

**How it works:** Exclusive Regeniplex® blend contains Kakadu plum, pea peptides, clover flower, turmeric and ginseng resulting in fuller, thicker hair.

**Added bonus:** Detangles without weighing hair down.

100ml	300ml	1000ml
RRP £7.50	£17.95	£38.95

## Scalp Care Take Home<sup>SM</sup> Kit

- Scalp Care Anti-Thinning Shampoo 100ml
- Scalp Care Anti-Thinning Conditioner 100ml
- Scalp Care Anti-Thinning Tonic 50ml

RRP £29.95

Usual RRP £34.00

## Scalp Care Anti-Thinning Tonic



Leave-On Scalp Stimulator

**What it does:** Twice-daily spray helps create an optimal scalp environment for thicker, stronger, fuller hair.

**How it works:** Exclusive Regeniplex® blend contains Kakadu plum, pea peptides, clover flower, turmeric and ginseng, and absorbs into the scalp to help stimulate resulting in fuller, thicker hair.

**Added bonus:** Helps encourage healthy hair growth.

50ml	100ml
RRP £19.25	£37.95

## Scalp Care Regimen Kit

- Scalp Care Anti-Thinning Shampoo 300ml
- Scalp Care Anti-Thinning Conditioner 300ml
- Scalp Care Anti-Thinning Tonic 100ml

RRP £60.00

Usual RRP £72.85





# AWAPUHI WILD GINGER®

## REPAIR

KERATIN-RICH PRODUCTS HELP REPAIR DAMAGE CAUSED BY HEAT STYLING, CHEMICAL PROCESSING AND AGING.



### Moisturizing Lather Shampoo® Rich Sulfate-Free\* Lather

**What it does:** Colour-safe, sulfate-free\* shampoo gently hydrates, protects and helps rebuild and repair dry, brittle strands.

**How it works:** Exclusive KeraTriplex® blend replenishes every strand for healthy-looking hair, while awapuhi extract balances moisture for manageability and shine.

**Added bonus:** Gentle enough to use daily.

100ml	250ml	1000ml
RRP £8.25	£18.95	£46.50



### Keratin Intensive Treatment® Deep Hydration and Protection

**What it does:** Weekly deep conditioner repairs and protects vulnerable hair, and delivers intense hydration and shine.

**How it works:** KeraTriplex® rebuilds and repairs to transform lackluster hair, while awapuhi extract replenishes every strand with intense moisture and shine.

**Added bonus:** Instantly improves hair texture with noticeable results.

100ml	150ml	500ml
RRP £17.95	£25.75	£59.95



### Keratin Cream Rinse® Silky Daily Conditioning

**What it does:** Strengthens and protects troubled tresses, and instantly detangles for silky, healthy-looking hair.

**How it works:** Exclusive KeraTriplex® blend helps repair every strand and protect against damage, while awapuhi extract softens and adds shine.

**Added bonus:** Replenishes thirsty hair, adds shine and is colour-safe.

100ml	250ml	1000ml
RRP £8.50	£20.95	£51.50

HAWAIIAN HERITAGE, TRANSFORMATIVE TECHNOLOGY.



## SMOOTH

A PROVEN SYSTEM THAT WORKS FROM THE OUTSIDE IN TO SMOOTH THE CUTICLE, REDUCE FRIZZ, ADD INTENSE SHINE AND PROTECT AGAINST THERMAL DAMAGE.



### MirrorSmooth® Shampoo

Frizz Control • Moisture Balance

**What it does:** Gentle, sulfate-free\* shampoo with rich foam restores the hair's optimal moisture balance and leaves locks silky-smooth.

**How it works:** Exclusive KeraReflect™ blend with natural Abyssinian oil replenishes moisture, smoothes the cuticle and boosts shine.

**Added bonus:** Helps prevent frizz and flyaways.

**250ml**  
RRP £18.95

**1000ml**  
£46.50



### MirrorSmooth® Conditioner

Eliminates Frizz • Superior Softness

**What it does:** Hydrates, instantly detangles and creates a shiny, reflective finish.

**How it works:** Exclusive KeraReflect™ blend with natural Abyssinian oil smoothes and softens every strand, so hair is easy to comb with an ultra-light finish.

**Added bonus:** Helps prevent frizz and flyaways while protecting from thermal damage.

**250ml**  
RRP £20.95

**1000ml**  
£51.50



### MirrorSmooth® High Gloss Primer

Shine • Thermal Protection

**What it does:** Primes the surface cuticle of the hair for a smooth, shiny, polished look and controls frizzy hair.

**How it works:** Exclusive KeraReflect™ blend with natural Abyssinian oil and thermal protectors restores moisture, adds shine and helps shield hair from the outside in.

**Added bonus:** Humidity-resistant formula creates a smooth finish in any weather and prevents thermal damage.

**20ml**  
RRP £8.25

**100ml**  
£27.75

## STYLE

PROTECT HAIR AS YOU LOCK IN YOUR STYLE WITH THE HYDRATING AND HEALING BENEFITS OF AWAPUHI WILD GINGER®.



### HydroCream Whip®

Frizz Control and Touchable Hold

**What it does:** Hydrates and smoothes thirsty hair, and delivers long-lasting, crunch-free hold with a silky finish.

**How it works:** Awapuhi extract and light conditioners fight frizz and balance moisture.

**Added bonus:** Helps create healthy-looking volume.

**70ml**  
RRP £10.25

**200ml**  
£24.25



### Texturizing Sea Spray®

Lush Waves and Exotic Texture

**What it does:** Creates tousled, beachy styles anywhere and adds lush volume with touchable movement.

**How it works:** Awapuhi extract balances moisture for a healthy-looking finish.

**Added bonus:** Enhances and defines curls and waves.

**25ml**  
RRP £7.25

**150ml**  
£21.25



### Shine Spray™

Natural Weightless Brilliance

**What it does:** Transforms dull strands with reflective shine.

**How it works:** Fine, lightweight mist ensures a natural finish; awapuhi extract balances moisture and intensifies shine.

**Added bonus:** Leaves hair soft and silky smooth.

**125ml**  
RRP £20.95



### Finishing Spray™

Touchable Hold

**What it does:** Secures hair with a flexible, touchable hold.

**How it works:** Humidity-resistant resins and awapuhi extract leave hair feeling soft and healthy.

**Added bonus:** Resists humidity and adds shine.

**300ml**  
RRP £19.75



### Styling Treatment Oil®

Softness and Shine

**What it does:** Quenches parched hair and smoothes frizz, leaving strands soft, silky and shiny.

**How it works:** Awapuhi extract and lightweight silicones seal, smooth and add shine.

**Added bonus:** Ultra-lightweight formula ensures a natural finish.

**25ml**  
RRP £8.25

**100ml**  
£27.95

**150ml**  
£35.95



### HydroMist Blow-Out Spray®

Style Amplifier & Weightless Hold

**What it does:** Preps hair for a flawless blow-dry.

**How it works:** The weightless formula delivers a clean, long-lasting hold. High-performance volumizers create the perfect blow-out. Natural awapuhi and honey extracts help protect hair from damage.

**Added bonus:** Boosts volume and hydrates dry strands.

**25ml**  
RRP £7.25

**150ml**  
£21.25



## KERATRIPLEX® TREATMENT

### *2-Step Repair*

**What it does:** KeraTriplex® Treatment transforms weak, broken and brittle strands into pillars of strength and protects from further damage.

**How it works:** Step one of the KeraTriplex® 2-step Repair Treatment, a single-shot ampoule of isolated proteins, is virtually identical to the keratin found in human hair.

**Added bonus:** Keratin Intensive Treatment® is applied as step two to hydrate and add healthy, silky shine.

**Professional Use Only**

---

80%

Reduced  
breakage\*

---

\*Compared to untreated hair, results may vary.



## HYDRATRIPLEX™ TREATMENT

**What it does:** Proven to make dry, frizzy hair 82%\* softer and more manageable with a rich, concentrated blend of amino acids, vegetable proteins and nourishing oils.

**How it works:** HydraTriplex™ technology hydrates, binds and seals every cuticle to revive parched strands and improve hair manageability.

**Added bonus:** Creates a long-lasting silky-smooth feel.  
**Professional Use Only**

---

82%

Softer, more  
manageable hair<sup>†</sup>

---

<sup>†</sup>Compared to untreated hair. Product was tested by an established, independent third-party laboratory.





MARULA OIL

DISCOVER  
A RARE LUXURY

Not all oils are equal.  
Experience the  
transformative power  
of wild-harvested,  
cold-pressed marula oil  
in a new, restorative  
hair care collection.

# MARULA OIL

## CARE

### Rare Oil Replenishing Shampoo



Smooth • Hydrate • Nourish

**What it does:** Gentle, colour-safe shampoo infused with cold-pressed marula oil, packed with powerful antioxidants and replenishing oleic acids for instant hydration, taming and softness.

**How it works:** Time-release MarulaSpheres adhere to the hair shaft and break open every time you brush or touch your hair, releasing fresh bursts of marula throughout the day.

**Added bonus:** Hair is soft, hydrated and full of body.

**222ml      710ml**

RRP £21.95      £43.95

### Rare Oil Replenishing Conditioner



Smooth • Soften • Nourish

**What it does:** Delivers intense hydration, instant detangling and a smooth, soft feel, plus the nourishment and protective power of cold-pressed marula oil.

**How it works:** Time-release MarulaSpheres adhere to the hair shaft and break open every time you brush or touch your hair, releasing fresh bursts of marula throughout the day.

**Added bonus:** Smoothes and repairs the hair surface for a shiny, flawless finish.

**222ml      710ml**

RRP £23.95      £46.95

### Rare Oil Intensive Hair Masque



Revitalize • Repair • Renew

**What it does:** Cold-pressed marula oil thoroughly hydrates and dramatically smoothes and softens dry, coarse hair and adds fullness to fine, limp hair.

**How it works:** Time-release MarulaSpheres adhere to the hair shaft and break open every time you brush or touch your hair, releasing fresh bursts of marula throughout the day.

**Added bonus:** Packed with powerful antioxidants, oleic acids, protein and vitamins, this replenishing, protective formula delivers intense hydration, seals split ends, prevents damage and provides UV protection.

**200ml      500ml**

RRP £31.95      £44.95

### Rare Oil Treatment

Versatile • Conditioning • Smooth



**What it does:** Cold-pressed marula oil is packed with powerful antioxidants and replenishing oleic acids for instant hydration, taming and softness.

**How it works:** Using only marula oil and esterized oil, this non-greasy, multitasking oil treatment pampers hair and skin with rich moisture.

**Added bonus:** Massage a few drops into your skin and nails/cuticles for added hydration, or add one full dropper to your hand and body lotion before applying.

**50ml**

RRP £33.95

### Rare Oil Treatment Light

Lightweight • Conditioning • Smooth



**What it does:** A featherweight version of our Rare Oil Treatment, specially formulated for fine hair. Cold-pressed marula oil is packed with powerful antioxidants and replenishing oleic acids for instant hydration, taming and softness.

**How it works:** Using only marula oil and esterized oil, this non-greasy, multitasking oil treatment pampers hair and skin with rich moisture.

**Added bonus:** Massage a few drops into your skin and nails/cuticles for added hydration, or add one full dropper to your hand and body lotion before applying.

**50ml**

RRP £33.95





MARULA OIL



# MARULAOIL

LUXURY MEETS STYLE WITH THE NEW ADDITIONS TO THE PRESTIGIOUS MARULAOIL COLLECTION INFUSED WITH PURE, COLD-PRESSED MARULA OIL TO HELP REPLENISH AND CONDITION HAIR AS YOU STYLE.

## STYLE



### Rare Oil Style Extending Primer

Condition • Protect • Extend

**What it does:** Primer spray creates an ideal foundation and extends the life of your style as it conditions and protects.

**How it works:** Lightweight memory forms a humidity-resistant shield for long-lasting style.

**Added bonus:** Smoothes and adds shine for a perfect blowout.

139ml

RRP £29.95



### Rare Oil 3-in-1 Styling Cream

Style • Condition • Treat

**What it does:** Multitasking styling cream instantly smoothes, fights frizz and helps seal split ends as it styles.

**How it works:** Creates a soft hold with beautiful shine and manageability.

**Added bonus:** The lightweight finish is ideal for all hair types.

150ml

RRP £29.95



### Rare Oil Perfecting Hairspray

Lightweight • Replenishing • Flexible

**What it does:** Flexible, layerable hairspray replenishes hair while it holds.

**How it works:** The fine mist effortlessly adds a perfect finishing touch to any style.

**Added bonus:** Locks out frizz and humidity with a touchable finish.

300ml

RRP £22.95

# MARULAOIL BRUSHES

## LUXURY MEETS STYLE

LIGHTWEIGHT IN CONSTRUCTION AND ERGONOMICALLY DESIGNED FOR EASY USE, MARULAOIL BRUSHES ARE AN INTEGRAL PART OF A LUXURIOUS MARULAOIL EXPERIENCE, HELPING TO ADD SMOOTHNESS, LUSTER AND SHINE.



- MarulaOil Classic Dressing Brush**
- Crafted from 100% premium-quality beechwood.
  - Dual-level, boar-like vegan bristles provide optimal tension for smoothing and dressing hair.
  - Helps minimize breakage.
  - Ideal for coarse, unruly hair.
  - Packaged in a premium outer box.

RRP £49.00



- MarulaOil Detangling Brush**
- Crafted from 100% premium-quality beechwood.
  - Helps minimize breakage.
  - Ultra-thin and highly flexible bristles glide effortlessly through wet or dry hair.
  - Optimally spaced bristles gently detangle while massaging the scalp.
  - Packaged in a premium outer box.

RRP £30.00

M  
MITCH



## CONCENTRATED. HIGH-PERFORMANCE. MODERN.



### Heavy Hitter®

Deep Cleansing Shampoo

**What it does:** Washes away dirt and product buildup for a powerful clean.

**How it works:** Invigorates and deep cleans without stripping natural oils; great for daily use.

**Added bonus:** Refreshing cedar and agave scent leaves hair smelling great.

**250ml**      **1000ml**

RRP £10.95      £22.95



### Double Hitter®

2-in-1 Shampoo & Conditioner

**What it does:** Washes and conditions in one step and leaves hair full and healthy-looking.

**How it works:** Conditioning ingredients provide improved detangling with a soft, light finish.

**Added bonus:** Hearty lather rinses clean with a fresh scent.

**75ml**      **250ml**      **1000ml**

RRP £5.95      £13.95      £29.95



### Hardwired®

Maximum Hold • Spiking Glue

**What it does:** A must-have for spiked and extreme looks; provides powerhouse control that lasts as long as you want it.

**How it works:** Powerful hair fixative delivers superior all-day hold.

**Added bonus:** Distributes easily and won't flake out.

**25ml**      **75ml**

RRP £5.95      £12.95



### Steady Grip®

Firm Hold • Natural Shine Gel

**What it does:** Shapes any style with lasting hold and makes hair look and feel thicker.

**How it works:** Long-lasting styling fixatives deliver all-day hold, while shine enhancers give hair a natural-looking polish.

**Added bonus:** Alcohol-free formula fights flaking and drying.

**75ml**      **150ml**

RRP £6.50      £12.95



### Construction Paste®

Elastic Hold • Mesh Styler

**What it does:** Flexible, webby texture forms and separates - great for messy, undone styles.

**How it works:** Long-lasting styling fixatives secure the style, while conditioning ingredients leave hair soft and manageable.

**Added bonus:** Crunch-free finish with no flaking.

**25ml**      **75ml**

RRP £5.95      £12.95



### Material™

Strong Hold • Ultra-Matte Styling Clay

**What it does:** Powerful styling clay bulks up texture with a dry, ultra-matte finish.

**How it works:** Thickening ingredients and strong fixatives grip hair and lock it in place. Natural clay creates a matte feel and eliminates shine.

**Added bonus:** Makes hair look and feel thicker for modern, textured looks.

**85g**

RRP £14.95



### Reformer®

Strong Hold • Matte Finish Texturizer

**What it does:** Pliable putty styler with a powerful hold bulks up fine or thin hair.

**How it works:** Thickening ingredients leave hair full and healthy-looking, while powerful fixatives lock the style in place.

**Added bonus:** Creates gritty, modern texture and a matte finish.

**10g**

RRP £5.95

**85g**

£14.95



### Clean Cut®

Medium Hold • Semi-Matte Styling Cream

**What it does:** Forms clean, no-fuss looks.

**How it works:** Pliable hold lets you shape and reshape with lasting control, while conditioning ingredients leave hair soft and manageable.

**Added bonus:** Subtle texture works well on any hair type.

**10g**

RRP £5.95

**85g**

£14.95



### Barber's Classic®

Moderate Hold • High Shine Pomade

**What it does:** Great for classic styles and slicked-back looks; tames curls and waves with smooth control.

**How it works:** Smoothing and conditioning ingredients make hair easier to handle, while a long-lasting styling fixative locks hair in place.

**Added bonus:** Works through hair quickly with comb or fingers.

**10g**

RRP £5.95

**85g**

£14.95



## INTELLIGENT STYLING

NEURO® TOOLS ARE CRAFTED FROM INDUSTRIAL-GRADE COMPONENTS UNDER RIGOROUS QUALITY CONTROL. CREATIVE VISION, POWERED BY CUTTING-EDGE TECHNOLOGY: **THAT'S INTELLIGENT STYLING.**



### Neuro® Smooth

1.25" Smoothing Iron

**What it does:** Perfect for smoothing, flips and waves.

**How it works:**

- Adjustable temperature control
- Heats up to 230°C in 30 seconds
- 1.25" premium IsoTherm titanium plates
- SmartSense microchip for lightning-fast heat recovery.

**Added bonus:** Dual voltage for worldwide use

RRP £99.95



### Neuro® Unclipped 3-in-1

Versatile styling tool

**What it does:** This multi-tasking iron can create endless styling possibilities, perfect for someone who is constantly changing their style.

**Details:**

- Premium IsoTherm titanium barrels with cool tip
- 0.75" cone, 1.25" cone and 1" rod
- Digital custom temperature control
- Heats up to 230° in seconds
- Dual voltage for worldwide use
- Backed by a 2-year warranty (with tool registration).

**Added bonus:** Free protective 3 finger glove

RRP £99.95



### Neuro® Style

1" Styling Iron

**What it does:** Creates volume, waves, curls and smooth styles.

**How it works:**

- Programmable temperature setting
- Heats up to 230°C in 30 seconds
- 1" premium IsoTherm titanium plates provide fast, even heat.

**Added bonus:** Contoured shape creates perfect volume, curls and waves.

RRP £99.95



### Neuro® Unclipped Styling Rod

1" Clipless Curling Iron

**What it does:** Perfect for beach waves and loose curls.

**How it works:**

- 1" clipless premium IsoTherm titanium barrel
- Adjustable temperature control
- Heats up to 230°C in seconds
- SmartSense microchip for lightning-fast heat recovery
- Extra-long barrel ideal for long hair
- Dual voltage for worldwide use.

**Added bonus:** Cool tip for easier styling.

RRP £74.95



### Neuro® Style Unplugged

Perfect for travelling and mid-day touch ups

**What it does:** This cordless styling iron is perfect for travelling and mid-day touch ups. The Lithium battery allows for between 30 minutes to 1 hour of styling, depending on hair type and heat setting.

**How it works:**

- 1" cordless styling iron
- Premium IsoTherm titanium plates
- Adjustable temperature control
  - 180° - 205°
- Complimentary protective sleeve
- Dual voltage for worldwide use
- Lithium battery allows for 30 minutes to an hour of styling depending on hair type and heat setting
- 2 year warranty.

**Added bonus:** Includes wall and car charger for convenient charging options

RRP £99.95



### Neuro® Unclipped Styling Cone

1.25" Clipless Tapered Curling Iron

**What it does:** Perfect for natural-looking curls.

**How it works:**

- 1.25" clipless premium IsoTherm titanium styling cone (tapers to .75")
- Adjustable temperature control
- Heats up to 230°C in seconds
- SmartSense microchip for lightning-fast heat recovery
- Extra-long barrel ideal for long hair
- Dual voltage for worldwide use.

**Added bonus:** 9-foot swivel cord with hanging loop.

RRP £74.95



### Neuro® Unclipped Small Styling Cone

.75" Clipless Tapered Curling Iron

**What it does:** Perfect for ringlets and spirals.

**How it works:**

- .75" clipless premium IsoTherm titanium small styling cone (tapers to 3/8")
- Adjustable temperature control
- Heats up to 230°C in seconds
- SmartSense microchip for lightning-fast heat recovery
- Extra-long barrel ideal for long hair
- Dual voltage for worldwide use

**Added bonus:** Programmable temperature setting.

RRP £74.95



## Neuro® Light

### Lightweight Hair Dryer

**What it does:** A lightweight, powerful 1875-watt DC motor dryer that creates the perfect blowout.

**How it works:**

- SmartSense filter with "Clean Filter" indicator light
- Tourmaline ions reduce frizz and add shine
- LED display shows heat and power settings
- Protective silver soft-touch rubber coating

**Added bonus:** Includes soft-touch styling nozzle and collapsible silicone diffuser that universally fits most dryers.

RRP £99.95



## Neuro® Motion

### Touch-Activated Dryer

**What it does:** MotionZone technology turns the dryer on when you pick it up and off when you put it down for super-efficient styling.

**How it works:**

- Touch-activated MotionZone technology powers dryer on and off
- Lightweight 1875-watt DC motor
- LED display shows heat and power settings
- 4 heat settings and cool shot button
- SmartSense microchip activates "Clean Filter" function
- Protective soft-touch rubber coating
- Color: Gray

**Added bonus:** Comes with a soft-touch styling nozzle and collapsible silicone diffuser that universally fits most dryers.

RRP £109.95



## Neuro® Grip

### Ergonomic Dryer

**What it does:** A handle-free design allows for ultimate comfort and control while styling.

**How it works:**

- Lightweight and compact - weighs only 1 pound
- Powerful 1875-watt DC motor
- Controls heat and airflow separately
- 3 heat/airflow settings plus a cool shot setting
- Protective black soft-touch rubber coating.

**Added bonus:** Includes concentrator nozzle and compact collapsible diffuser.

RRP £89.95



## Neuro® Dry

### High Performance Dryer

**What it does:** Tourmaline ions dry hair quickly and gently from the inside out, reducing frizz and adding shine.

**How it works:**

- 1875-watt professional AC motor
- 4 heat settings and cool shot button
- Protective rubber coating to prevent damage when dropped
- LED display shows heat and power settings
- Includes concentrator nozzle and collapsible silicone diffuser

**Added bonus:** SmartSense microchip activates "Clean Filter" light.

RRP £99.95



## Neuro® V8 Compact Hot Roller Deck

### Premium Hot Roller System

**What it does:** Creates perfect curls, waves and volume.

**How it works:**

- SmartSense microchip ensures rollers stay hot while styling
- Rapid 8-second heat-up time
- Customizable temperature settings: fine, medium, coarse and max
- Flocked rollers provide grip, tame frizz and smooth curls
- One-hour shut-off safety feature
- Includes six 1" rollers and clips

**Added bonus:** Colour-changing indicator light shows when rollers are hot.

RRP £99.95



## Neuro® Round

### Titanium Thermal Brushes:

Sizes S, M, L

**What it does:** Creates smooth, shiny results in less time.

**How it works:**

- Premium IsoTherm titanium heat-retaining barrel reduces drying time
- Bristles are high-heat-resistant nylon (up to 260°C)
- Anti-static corkscrew bristle design delivers a smooth finish
- No-slip, soft-touch finish
- Ergonomic, balanced and lightweight

**Added bonus:** Magnetic handle cap lets brush stand upright.

**S**

RRP £19.95

**M**

£20.95

**L**

£21.95



**2 YEAR WARRANTY\***

### ALL NEURO® IRONS FEATURE:

- SmartSense microchip - regulates temperature 50 times per second
- IsoTherm titanium - outperforms ceramic by providing fast, even heat
- Exterior LCD display and programmable temperature setting
- Customizable auto shut-off

TO LEARN MORE ABOUT NEURO® TOOLS,  
VISIT [PAUL-MITCHELL.CO.UK](http://PAUL-MITCHELL.CO.UK)

[paul-mitchell.co.uk/neuro-tool-registration](http://paul-mitchell.co.uk/neuro-tool-registration)

# PAUL MITCHELL® PRO TOOLS™



## Express Ion Curl®

### Editor's Pick

**What it does:** 1" aluminum barrel creates flawless ringlets and waves, ensuring hydrated curls with incredible shine and staying power.

#### How it works:

- Express Ion Complex™ hydrates and adds shine
- Digital temperature control and temperature lock
- Heats up to 205°C

**Added bonus:** Ceramic heat delivery system prevents cold spots for faster styling.

RRP £39.95



## Pro Curling Wand®

**What it does:** Achieve professional curls and waves effortlessly

#### How it works

- Ceramic Barrel for even heat distribution
- Long length swivel cord to prevent cord tangles
- 200°C maximum heat with 11 temperature settings

**Added bonus:** Cool tip for easier styling

RRP £49.95

## Express Ion Dry® TurboLight®

**What it does:** Minimizes drying time and maximizes healthy results by delivering an extra dose of conditioning technology for vulnerable locks.

#### How it works

- Express Ion Complex™ creates shiny, hydrated results
- Conditioning NanoPearls inside barrel
- 1875-watt professional AC motor
- 3 temperatures/2 speed settings and a self-locking cool shot button
- Styling nozzle with Express Ion Complex™

**Added bonus:** Super lightweight and features a powerful airflow that's ideal for thick hair.

RRP £79.95



## The Diffuser - TurboLight®

**What it does:** Dries curls and waves without blowing out their natural shape.

#### How it works

- Makes curls bouncy, defined and full of volume.

**Added bonus:** Speeds up drying and delivers shiny, conditioned results.

RRP £9.95





# EVERY DAY ESSENTIALS

STRAIGHTEN, SCULPT AND SMOOTH STRANDS WITH THESE STYLING ESSENTIALS FROM PAUL MITCHELL® PRO TOOLS™.



## Express Ion Round®

Sizes S, M, L, XL

**What it does:** Helps minimize flyaways and creates a sleek, frizz-free finish.

**How it works:**

- Aluminum barrel heats up during blow-drying to help shape your style
- Express Ion Complex™ molded into the bristles and barrel helps hair dry faster and creates static-free styles
- Uniquely shaped corkscrew bristles provide a smoother finish

**Added bonus:** Speeds up drying time.

	S	M	L	XL
RRP	£15.70	£17.00	£18.20	£19.20



## 413 Sculpting Brush

**What it does:** Easily detangles wet or dry strands and styles hair.

**How it works:** Slim paddle design ideal for sculpting and styling.

**Added bonus:** Great for blow-drying and finishing.

RRP £7.50



## 427 Paddle Brush

**What it does:** Helps build body while blow-drying and provides a smooth finish.

**How it works:** Wide paddle design provides maximum control for a smooth finish.

**Added bonus:** Lightweight for easy styling.

RRP £12.25



## 407 Styling Brush

**What it does:** Smoothes and polishes strands, and gently grips hair without pulling.

**How it works:** Rounded design and nylon bristles smooth and polish strands.

**Added bonus:** Perfect for blow-drying.

RRP £9.95



## Detangler Comb

**What it does:** Easily detangles wet or dry hair.

**Added bonus:** Provides antibacterial protection.

RRP £4.15



## Sectioning Clips

**What it does:** All-purpose styling clips feature a slip-free design.

**How it works:** Antimicrobial plastic provides antibacterial protection.

RRP £6.95



## Tease XL

Deluxe wood tool with a blend of boar and nylon bristles. - Dual-purpose with a narrowed tip to ensure perfect sectioning. - Wide bristle panel to create extra-large volume when teasing hair at the roots.

RRP £11.50



# PAUL MITCHELL® PROFESSIONAL HAIR COLOR

HEALTHY, VIBRANT HAIR COLOUR IS THE BEST ACCESSORY.



## Paul Mitchell® the color XG®

### Permanent Cream Hair Colour

**What it does:** Opaque permanent colour is easy to use and provides up to 100% grey coverage.

**How it works:**

- DYESMART® System ensures maximum colour penetration, greater longevity and brilliant vibrancy in red shades
- Pure XG Protection System is a blend of soothing ingredients, including cottonseed oil and rice milk that leaves hair shiny and healthy.

**Added bonus:** Rich cream base is easy to mix, apply and rinse.

## The Demi

### Demi-Permanent Hair Colour

**What it does:** The Demi conditions hair while it colours, providing incredibly rich results with exceptional shine.

- Refresh or correct: Bring dull, weary ends back to life or correct unwanted tonality
- Opaque grey blending: Provide discreet coverage to conceal grey hair
- Tone and refine: Customise a palette, from natural shades to unique and trendsetting, to create the perfect tone
- Top coat: Add pure shine for colour-shy guests using Clear alone.

**How it works:**

- Deposit-only, ammonia-free colour is exceedingly gentle and offers outstanding condition.
- Intermixable shades, including Clear, offer unlimited customization and more varied shade options with depth and/or translucency
- Liquid colour mixes to a perfect gel consistency that's ideal for both bottle and brush application.

**Added bonus:** Rich, vibrant colour lasts 4 to 6 weeks.



## Paul Mitchell® shines XG®

### Demi-Permanent No-Ammonia Hair Colour

**What it does:** A beautiful palette of shades plus a Clear Shine offers opaque, deposit-only, tone-on-tone colour brilliance and grey blending, as well as up to 1 level of lift.

- No-ammonia formula is easy to mix and apply
- Colour lasts 4-6 weeks and fades on tone.

**How it works:**

- DYESMART® System allows for maximum colour penetration and predictability
- Features the Pure XG Protection System with cottonseed oil, rich in strengthening proteins, and rice milk, known to help prevent oxidative damage
- Use **shines XG®** with 5 volume Developer for deposit-only, tone-on-tone colour brilliance and grey blending
- For more vibrant results, opaque coverage and up to 1 level of lift, use with 10 volume Developer.

**Added bonus:** Lasts 4-6 weeks.



## POP XG™

### Vibrant Semi-Permanent Cream Hair Colour

**What it does:** Offers a spectrum of electric and intermixable shades for a bright pop of colour.

**How it works:**

- Features a conditioning base for soft, shiny and even end results
- The rich, cream texture is perfect for controlled, clean application
- No developer required.

**Added bonus:** Provides a pop of color for up to 6 weeks, depending on porosity.







## POP XG™ Reducer

### Hand-painting clay lightener

**What it does:** Can be mixed with water or developer to provide controlled lift of unwanted direct dye pigments, while maintaining the condition of the hair

**How it works:**

- For hair treated with direct dyes or semi-permanent hair colour
- For more gentle removal, mix with 85ml of water instead of developer
- Process for 5 - 45 minutes at room temperature, check every 5 minutes for desired correction and/or removal.



## SKYLIGHT™

### Hand-painting clay lightener

**What it does:** Freehand painting - Ideal for precision with freehand application techniques, including balayage and highlights.

**How it works:**

- No transfer - Rice flour and kaolin clay help from an outer shelf during processing that doesn't completely dry out or flake, allowing for zero transfer during application. Helps eliminate that need for foil, non-transfer plastic or cotton.

**Added bonus:** Skylight™ does not require the use of a dedicated developer. It mixes to a perfect, creamy consistency and helps retain moisture during processing.



## INKWORKS®

### Semi-Permanent Hair Colour

**What it does:** Provides vibrant, pure tones or an "aura" of colour. Available in 6 intermixable shades: Yellow, Red, Hot Pink, Purple, Blue and White.

**How it works:**

- INKWORKS® sits primarily on the outside of the hair shaft - the greater the porosity and lighter the base colour, the more intense the end result
- INKWORKS® White may be used alone for intense shine or to dilute shades for pastel tones on pre-lightened hair.

**Added bonus:** Lasts up to 3 weeks



## SynchroLift®

### Ultra-Quick Blue Powder Lightener

**What it does:** Exclusive balanced bleach technology lifts up to 7 levels quickly and gently.

- On-scalp double process blonding
- Off-scalp foil highlighting
- Ideal for any lightening technique.

**How it works:** Mixes to a creamy consistency that resists swelling and lifts up to 7 levels.

**Added bonus:** Features potato starch and zero fragrance for a pleasant colouring experience.



## Dual-Purpose Lightener

### On and Off-Scalp Powder Lightener

**What it does:** Creates beautiful blondes, no matter what your canvas or starting level, and lifts up to 7 levels while helping to retain moisture and shine

- On-scalp double process blonding
- Off-scalp foil highlighting
- Colour correction
- Ideal for any creative lightening technique.

**How it works:**

- Fast-lifting base, combined with natural conditioning oils, lifts up to 7 levels quickly.
- A gentle fragrance offers a soothing experience.

**Added bonus:** Offers gentle, even lift with control, making it ideal for any lightening technique.



## Lighten Up®

### On and Off-Scalp Blonding Paste

**What it does:** Delivers flawless blonde hues, even on fine, fragile hair. Specially balanced lifting agents gently provide fast, even lift up to 5 levels.

- Ideal for colour correction and creative techniques
- Lifts on tone
- Non-irritating on even the most sensitive scalps
- Resists drying out

**How it works:** Unique amino acid conditioning agents help reduce moisture loss and minimize cuticle damage, while soothing aloe helps calm scalp irritation for an enjoyable guest experience.

**Added bonus:** Creamy beeswax base is easy to mix for effortless, flexible application.



### Wipe Out®

#### Liquid Colour Remover

**What it does:** Removes colour stains from skin after hair colour services.

**How it works:** Sulfate-free\* surfactants quickly remove stains from skin.

**Added bonus:** Gentle liquid is easy to use.

**250ml**



### Color Block®

#### Barrier Cream

**What it does:** Rich cream forms a barrier between hair colour and skin to help prevent staining.

**How it works:** Emollient, moisturizing conditioners and panthenol treat the hair as they protect.

**Added bonus:** Excellent for dimensional colouring techniques; prevents penetration and deposit of colour on selected sections, and helps hold foils in place.



### Paul Mitchell® Permanent Waves

#### Acid, Alkaline and Exothermic Formulas

**What it does:** Three perm formulas create the right wave for the right guest.

- Acid: Ideal for tinted and 50% highlighted hair
- Alkaline: Ideal for resistant, normal, grey and white hair
- Exothermic: Ideal for resistant, normal and fine hair

**How it works:** Thio-free formula helps reduce skin irritation and diminishes the traditional perm odour.

**Added bonus:** Reduces the risk of over-processing and leaves hair in excellent condition.

---

OPT FOR COMPLETE COVERAGE, INDULGE IN A SUBTLE COLOUR BOOST OR TRY ON A BOLD NEW HUE. WITH PAUL MITCHELL® PROFESSIONAL HAIR COLOR, COUNT ON LONG-LASTING, SHINY, CONDITIONED RESULTS.

FOR MORE INFORMATION ON OUR PROFESSIONAL BRANDS, STYLISTS CAN LOG ON TO [SALON-SUCCESS.CO.UK/PRO](http://SALON-SUCCESS.CO.UK/PRO)

---

\*Does not contain sodium laureth sulfate or sodium laurel sulfate





# JOHN PAUL PET®

DISCOVER JOHN PAUL PET® A LUXURY GROOMING AND CARE SYSTEM FOR PETS. SHAMPOOS, CONDITIONERS AND HYGIENIC PET WIPES. PH BALANCED AND TESTED ON HUMANS FIRST.

JOHN PAUL DEJORIA IS THE CO-FOUNDER OF

**PAUL MITCHELL®**  
LUXURY HAIR CARE



## SHAMPOOS

- low lather • pH balanced • superior ingredients

All our Shampoos are specially formulated with our exclusive botanical extract blend. The pH is just right for pets' skin. Low lather for easy rinsing, coats are left shiny and soft with a fragrance that's pleasing to pets (no strong perfumes to irritate sensitive noses).



### Awapoochi® Shampoo

Our most luxurious Shampoo incorporates Shine Memory, to reactivate the shine in your pet's coat.

**300ml**  
RRP £11.95



### Tea Tree Shampoo

Cleans and soothes while reducing skin irritations. Tea tree leaf oil and eucalyptus help relieve skin irritation and soothe hot spots.

**473ml**  
RRP £10.95



### Calming Moisturizing Shampoo

This ultra rich luxurious Shampoo is formulated with aloe vera gel, sweet almond oil and chamomile extracts to help nourish and replenish dry, dull coats.

**473ml**  
RRP £10.95



### Waterless Foam Shampoo

A rich, waterless leave-on foam Shampoo with an exclusive blend of botanicals. Helps to clean and refresh your pet's coat and soothe skin, without using water.

**250ml**  
RRP £10.95



### Oatmeal Shampoo

Specially formulated to help relieve skin irritations and promote healing, while helping to moisturise dry, itchy skin.

**473ml 946ml**  
RRP £10.95 £16.95



### NEW Lavender Mint Shampoo

Gently cleanses, conditions and hydrates the skin and coat with the calming effect of lavender and mint.

**473ml**  
RRP £10.95



### Smooth Detangling Shampoo

This Smooth Detangling Shampoo has been created to cleanse, smooth, soften and detangle pets' coats.

**300ml**  
RRP £11.95



### Super Moist Shampoo

The ultra rich Super Moist Shampoo is a luxurious, EDTA and paraben free grooming product formulated to cleanse and moisturize pets' coats.

**300ml**  
RRP £11.95



### Super Bright Shampoo

This formula has been developed to help lighten and brighten coats, while helping to control matting, tangling and flyaway hair.

**473ml**  
RRP £10.95



### Tearless Shampoo

Designed specifically for puppies and kittens with sensitive skin, the tearless formula contains an exclusive botanical blend to help condition and add lustre to your pet's coat.

**473ml**  
RRP £10.95

CONDITIONERS

- easy use • pH balanced
- superior ingredients

For fuss-free fur for moggies and mongrels John Paul Pet® has it covered. All our Conditioners are specially formulated with our exclusive botanical extract blend. The pH is just right for pets' skin. Tangles are eased and coats left shiny and soft with a fragrance that's pleasing to pets.



Awapoochi® Conditioning Rinse

Awapoochi Conditioning Rinse with Shine Memory renews the shine and lustre of your pet's coat between grooming by simply brushing.

300ml

RRP £11.95



Tea Tree Conditioning Spray

Specifically formulated to penetrate and help revitalize skin and coat. Helps add shine to dull, dry coats.

236ml

RRP £10.95



Oatmeal Conditioning Rinse

This rich Conditioner helps restore a silky feel to the coat, whilst improving both wet and dry combing.

473ml

RRP £10.95



Instant Detangling Spray

No-rinse Conditioner. Specifically formulated to penetrate into the coat and help to release unruly snarls. Excellent for use between grooming visits.

236ml

RRP £10.95



NEW Lavender Mint Detangling Spray

Lavender and mint calms, soothes and replenishes dry, unruly hair. Thirteen Conditioning Agents including Oatmeal, Chamomile, Sweet Almond Oil, and Panthenol combine to coat and penetrate strands to release tangles.

236ml

RRP £10.95



Oatmeal Conditioning Spray

Leave-in condition and shine on dull, dry coats. Specifically formulated to penetrate and revitalize the skin and coat. Detangles the coat for easy brushing.

236ml

RRP £10.95

WIPES

- handy • kind and gentle
- high quality

With a choice of three wipes you can keep your pet looking dandy. As with our Shampoos and Conditioners these wipes have been specifically formulated with your pet in mind - perfect for quick clean-ups to prevent mucky pups and moggies.



Body & Paw Pet Wipes

These pre-moistened wipes are specially formulated to help cleanse and groom your pet, either after a walk or for a quick clean up. Also helps to remove loose hairs and build-up on the coat.

45 Sheets

RRP £8.95



Ear & Eye Pet Wipes

These pre-moistened wipes are specially formulated to help remove tear stains and matter that accumulates around the ears and eyes. Painless for your pet and easy to use.

45 Sheets

RRP £8.95



Tooth & Gum Pet Wipes

These pre-moistened wipes are specially formulated to help promote dental hygiene in your pet. Can be used between veterinary visits to help promote fresh breath and healthy gums.

45 Sheets

RRP £8.95

Shampoos, Conditioners and hygienic Pet Wipes. pH balanced and tested on humans first.



Hand wash Only with John Paul Pet®



#IHEARTPM



Paul Mitchell UK

[www.paul-mitchell.co.uk](http://www.paul-mitchell.co.uk)

---

**PAUL MITCHELL**®

---